


SpeedLimit 4

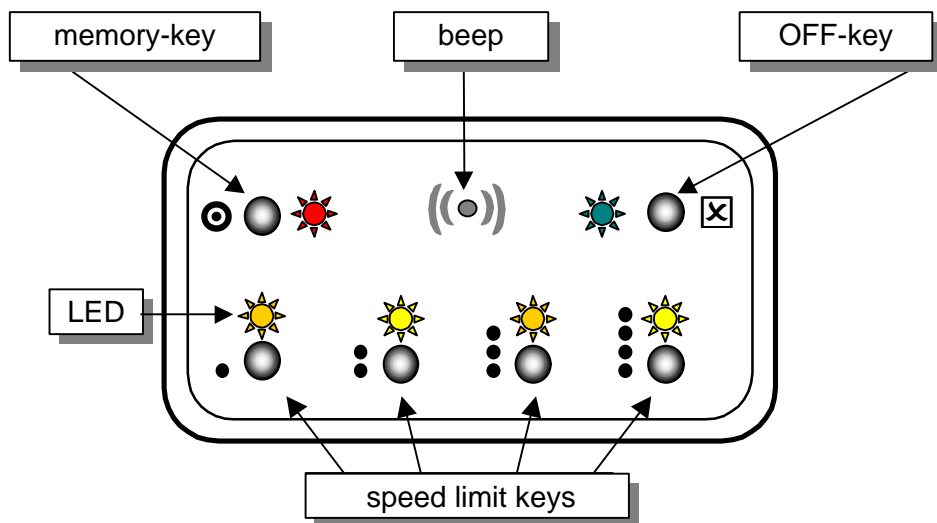
electronic speed limit warning device

E24 10R - 02 0139
ECE type approval



USER MANUAL

❖ *Speed Limit 4* warns the driver by 4 discreet beeps, when he passes the speed limit chosen by himself. If the driver will not slow down, this alarm will be repeated every 8 seconds.



Operation of the device is very easy, No distraction while driving.

Pressing any key must be confirmed by a beep signal - and then the light of the LED corresponding to the key indicates that the function of this key is activated.

❖ At any time four speed limits can be selected at soon, by briefly pressing a key, e.g.:-



NOTE: After installation, first **MEMORIZE YOUR SPEED LIMITS !**

You decide, which speed limit to be memorized on which key.

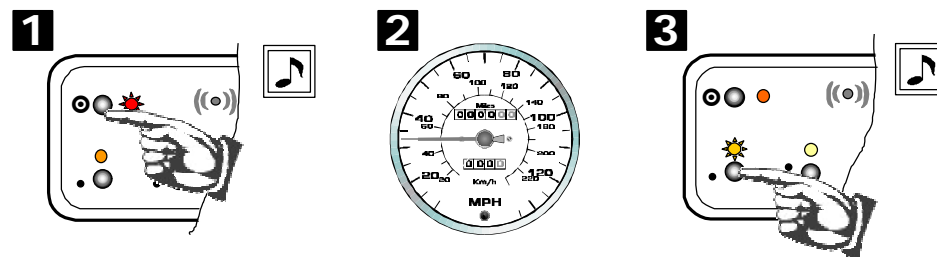
❖ When restarting the engine, the speed limit memorized on key ● is automatically activated. Hence consider which speed limit will be here the proper one for you.

❖ By the OFF-key ☒ the warning device can be switched off immediately. Pressing any of the 4 limit-keys, however, resets the warning function at soon.

MEMORIZE YOUR SPEED-LIMITS

❖ At soon every actually driven speed can be easily memorized as one of the 4 speed limits.

Here an example, how to memorize a speed limit on key ●:-



- 1 Press memory-key ●, till a beep sounds and the red LED ● flashes up.
- 2 Now drive exactly the speed to be memorized as a speed limit.
- 3 Press key ●. A long beep sounds, and the red LED ● goes out. The driven speed is now memorized as the speed limit on key ●.

In the same manner memorize other speed thresholds to the other 3 keys ●●●●

❖ If you want, a new speed limit can be memorized by each limit-key at any time.

❖ Your current 4 speed limits will be kept memorized, even if battery runs down.

NOTE: *Speed Limit 4* fits for cars with electronic speedometer pulses. For cars with digital speed signals (CANBUS) or speedometer drive, appropriate converters are required.

INSTALLATION

Let *Speed Limit 4* be installed by an expert shop. Electrical voltages must be verified by digital testers (e.g. voltmeter). Before starting to install, if possible, disconnect car battery's negative pole. (Note that transitory memories hence may require a new input or adaptation: clock, radio, heater...). Security directions and injunctions prescribed by car's producer and handicraft must be observed.

Manufacturer's liability will not cover any defect or malfunction of the device or the vehicle's electrics due to incorrect installation or exceeding of the technical data.

Electrical connections:

black wire	to a valid ground (-31), earth
red wire	to positive after ignition (+15), - by a 2A-fuse
blue wire	to a wire transmitting the tachometer speed signal

HINT: Often all connections can be performed at the fuse box.

HINT: Speed signals are required, too, for automatic muting of the radio sound volume, for navigation devices..... Hence you can find in Internet hints about the connection possibilities of many vehicle models.

Position: *SpeedLimit 4* has to be fixed on a thoroughly cleaned surface by means of bi-adhesive tape, in a position well visible and easy-in-reach for the driver.

Technical data:

power feeding	9 ÷ 14 Volt DC
consumption	5 mA